



ICAM-1 Polyclonal Antibody

Catalog No	YP-Ab-16292
Isotype	IgG
Reactivity	Human;Rat;Mouse;
Applications	WB;IHC;IF;ELISA
Gene Name	ICAM1
Protein Name	Intercellular adhesion molecule 1
Immunogen	The antiserum was produced against synthesized peptide derived from human ICAM-1. AA range:479-528
Specificity	ICAM-1 Polyclonal Antibody detects endogenous levels of ICAM-1 protein.
Formulation	Liquid in PBS containing 50% glycerol, 0.5% BSA and 0.02% sodium azide.
Source	Polyclonal, Rabbit,IgG
Purification	The antibody was affinity-purified from rabbit antiserum by affinity-chromatography using epitope-specific immunogen.
Dilution	WB: 1/500 - 1/2000. ELISA: 1/10000.. IF 1:50-200
Concentration	1 mg/ml
Purity	≥90%
Storage Stability	-20°C/1 year
Synonyms	ICAM1; Intercellular adhesion molecule 1; ICAM-1; Major group rhinovirus receptor; CD antigen CD54
Observed Band	58kD
Cell Pathway	Membrane; Single-pass type I membrane protein.
Tissue Specificity	Blood,Kidney,Liver,Melanoma,Plasma,
Function	function:ICAM proteins are ligands for the leukocyte adhesion protein LFA-1 (integrin alpha-L/beta-2). During leukocyte trans-endothelial migration, ICAM1 engagement promotes the assembly of endothelial apical cups through SGEF and RHO G activation. In case of rhinovirus infection acts as a cellular receptor for the virus.,online information:ICAM-1,online information:Icosahedral capsid structure,online information:Intercellular adhesion molecule entry,polymorphism:Homozygotes with ICAM1-Kalifi Met-56 seem to have an increased risk for cerebral malaria.,PTM:Monoubiquitinated, which is promoted by MARCH9 and leads to endocytosis.,similarity:Belongs to the immunoglobulin superfamily. ICAM family.,similarity:Contains 5 Ig-like C2-type (immunoglobulin-like) domains.,subunit:Homodimer (Probable). Interacts with human herpesvirus 8 MIR2 protein (Probable). Interacts with MUC1 and promotes cell a



Background

This gene encodes a cell surface glycoprotein which is typically expressed on endothelial cells and cells of the immune system. It binds to integrins of type CD11a / CD18, or CD11b / CD18 and is also exploited by Rhinovirus as a receptor. [provided by RefSeq, Jul 2008],

matters needing attention

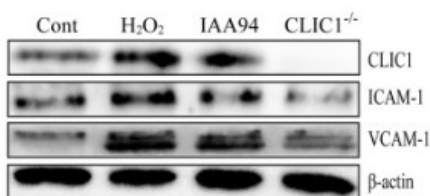
Avoid repeated freezing and thawing!

Usage suggestions

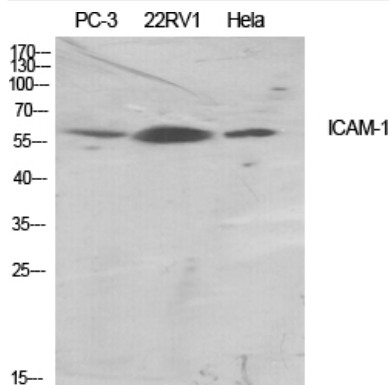
This product can be used in immunological reaction related experiments. For more information, please consult technical personnel.

Products Images

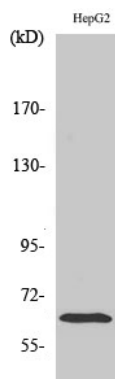
C



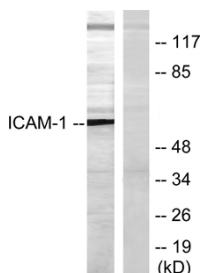
Xu, Yingling, et al. "CLIC1 inhibition attenuates vascular inflammation, oxidative stress, and endothelial injury." PloS one 11.11 (2016): e0166790.



Western Blot analysis of various cells using ICAM-1 Polyclonal Antibody diluted at 1:500



Western Blot analysis of HepG2 cells using ICAM-1 Polyclonal Antibody diluted at 1:500



Western blot analysis of lysates from HepG2 cells, using ICAM-1 Antibody. The lane on the right is blocked with the synthesized peptide.